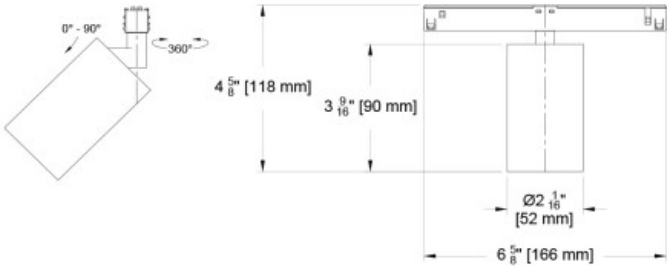


The Yashar Family

Welcome to the Yashar Low Voltage Scope Vardi track accent light, for use with our 48 volt low voltage track. The accent light, a derivative of the Scope Vardi Monopoint, is the smallest head in our track offering. It features integral drivers mounted in the track adaptor, including 0-10 volt, and DALI dimming options. Sources include static white LEDs in a variety of color temperatures, as well as our proprietary Ambient Dim chips. In addition, all of the finish options available in the Monopoint are available in the Yashar version.



PROJECT: TYPE:
SPECIFIER: DATE:

Key Points (YSLH-SCV)

Housing

- Track accent head for use in Yashar Low Voltage Track.
- Adjustable 360° degree rotation and 90° degree tilt.
- 40 finish options, including anodized, brass, painted + Custom/RAL#.
- Precision CNC machined aluminum in New Jersey.
- Track mounted with integral drivers in track adaptor fitting.

Source / Optics

- 2 beam spreads - 15° and 30°
- Up to 748 delivered lumens
- <2 MacAdams Ellipses (<2 SDCM) for fixed white
- 2700, 3000, 3500, 4000K, Ambient Dim in three CCT ranges.
- 90+ CRI, 60+ R9 Standard, 95+ CRI, 90+ R9 available with Ambient Dim option
- **TITLE 24** Supports CA Title 24 part 6 Requirements to JA8
- Lifetime: L87B3>55,000 hours at 40°C Ambient

Driver And Control

- Integral 48 volt track adaptor drivers in 0-10V or DALI protocol.
DALI control enables individual control of each fixture.

Finish Options - See finish guide for full spectrum of colors

PXX- Powder Coat Paint examples



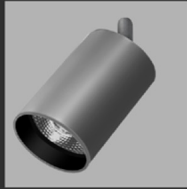
W White Paint P13 Moog Bronze

AXX- Anodize finish examples



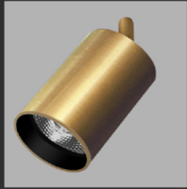
A01 Black Anod. A32 Clear A20 Blue

AMXX- Matte Anodize



AM32 Clear

BXX- Brass finish



B05 Satin Brass

Beamspreads		15°					30°				
	System watts (W)	Delivered Lumens (lm)	Lumens/ Watt	UGR	Peak CD	10% Field	Delivered Lumens (lm)	Lumens/ Watt	UGR	Peak CD	10% Field
Citizen C5	6	462	77	6	4939	29°	464	76	8	1549	49°
Citizen C9	9	707	79	10	6374	32°	748	84	10	2500	50°
Ambient Dim A5	6	311	52	8	2829	31°	315	52	6	985	50°
Ambient Dim A9	10	599	59	9	3633	40°	609	60	9	2051	50°

Ordering Codes

PROJECT:

SPECIFIER:

DATE:

TYPE:

QUANTITY:

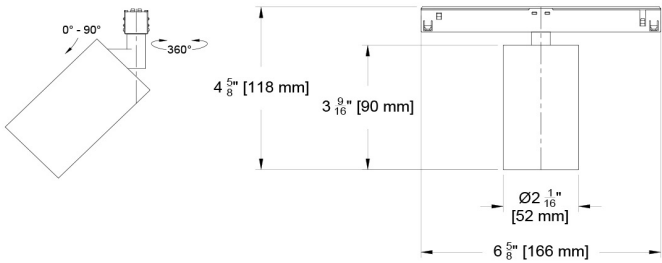
Ordering Code Example: YSLH-SCV-C9-27-15-TD1-AM01-91L/97L

FIXTURE	SOURCE / WATTS	CCT	BEAM	DRIVER / CONTROL	HEAD FINISH	ACCESSORIES
YSLH-SCV						
Yashar Low Voltage Scope Vardi Track Head	<div>Citizen</div> <div>C5 6W 484Lm* 90+CRI, 60+R9</div> <div>C9 10W 748Lm* 90+CRI, 60+R9</div> <div>Ambient Dim™</div> <div>A5 6W 314Lm* 95+CRI, 90+R9 3000k to 1900k</div> <div>A9 10W 609Lm* 95+CRI, 90+R9 3000 to 1900k</div> <div>Supports CA Title 24 part 6 compliance to JA8 requirements</div> <div>*Based on 30° Beam</div>	<div>27 2700K</div> <div>30 3000K</div> <div>35 3500K</div> <div>40 4000K</div> <div>Ambient Dim™</div> <div>3019 3000-1900K</div>	<div>15 Spot</div> <div>30 Narrow Flood</div>	<div>TD1 0-10V 2.0%, (48-277V) linear</div> <div>TD2 DALI-2 1.0%, (48-277V) linear</div>	<div>AM01 Black Matte Anodize^</div> <div>AMXX Specialty Matte Anodize Color^</div> <div>AM1-AM36</div> <div>A32 Clear Anodize^</div> <div>AXX Specialty Anodize Color^</div> <div>A1-A36</div> <div>W White Paint^</div> <div>PXX Specialty Paint Color*</div> <div>P01-P15</div> <div>B05 Satin Brass^</div> <div>BXX Brass Finishes^</div> <div>B01-B07</div> <div>Note: Track adaptor furnished in White with W finish head. Other finishes furnished with a black track adaptor unless otherwise specified.</div> <div>^Stem comes in selected color</div> <div>* See Finish Guide</div>	<div>Reflector (lamp) Media</div> <div>91L Solite*</div> <div>97L Black Hexcel Louver*</div> <div>XXL Other Reflector (lamp) Media*</div> <div>Other</div> <div>STM Standard length 3/8" For custom size, indicate in inches</div> <div>LENS ACCESSORY VISUAL GUIDE LINK</div> <div>FINISH GUIDE LINK</div>

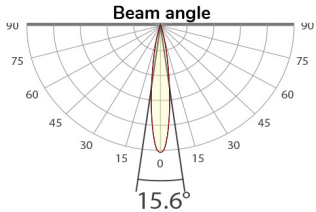
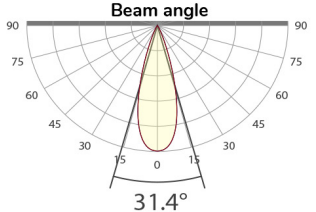
Dimensions

Yashar Low Voltage Scope Vardi Track Head Standard Mount

(YSLH-SCV)



Photometric Table All data below are delivered lumens based on goniometer measurements of production representative product. All lumen values can vary +/- 10% from LED manufacturer rated nominal flux.

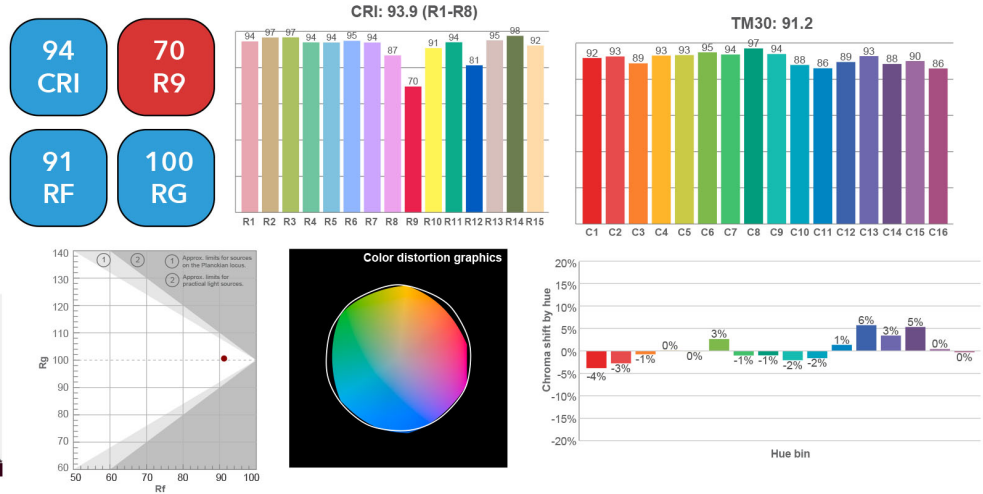
Beamspreads		15°					30°				
	System watts (W)	Delivered Lumens (lm)	Lumens/ Watt	UGR	Peak CD	10% Field	Delivered Lumens (lm)	Lumens/ Watt	UGR	Peak CD	10% Field
Citizen C5	6	462	77	6	4939	29°	464	76	8	1549	49°
Citizen C9	9	707	79	10	6374	32°	748	84	10	2500	50°
Ambient Dim A5	6	311	52	8	2829	31°	315	52	6	985	50°
Ambient Dim A9	10	599	59	9	3633	40°	609	60	9	2051	50°
CCT Multiplier											
CCT	Citizen										
2700	0.95										
3000	1.00										
3500	1.02										
4000	1.03										

Color Data

All data below are delivered lumens. Color and flux information based on goniometer measurements of production representative product. All values can vary +/- 10% from LED manufacturer data range as listed on their datasheet.

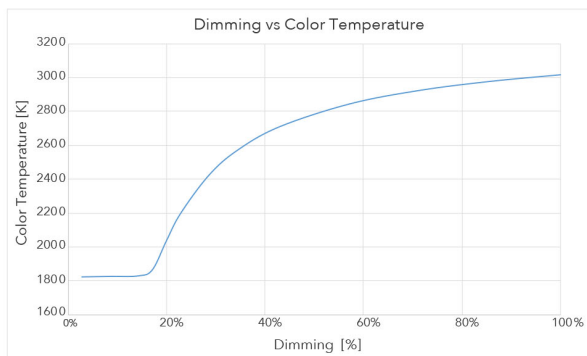
Citizen Source C5, C9

- <2 MacAdam Ellipse (<2 SDCM)
- 90+ CRI and RF
- 60+R9, Hue Bin 1

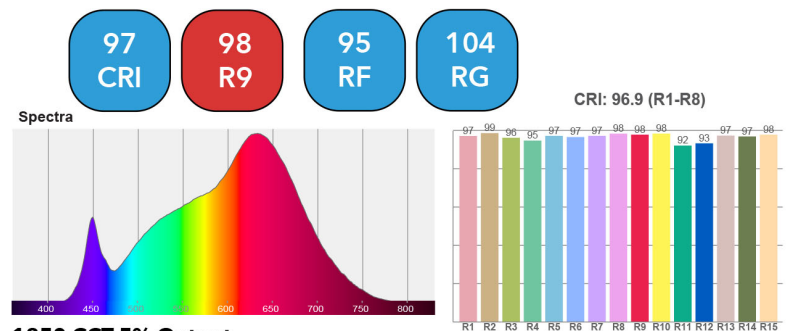


Ambient Dim Source - A5, A9 (AD - 3000k to 1900k)

- <3 MacAdam Ellipse (<3 SDCM)
- 95+ CRI and RF
- 90+R9, Hue Bin 1
- Follows Black Body Locus through dimming range



3000 CCT Full Output



1850 CCT 5% Output

